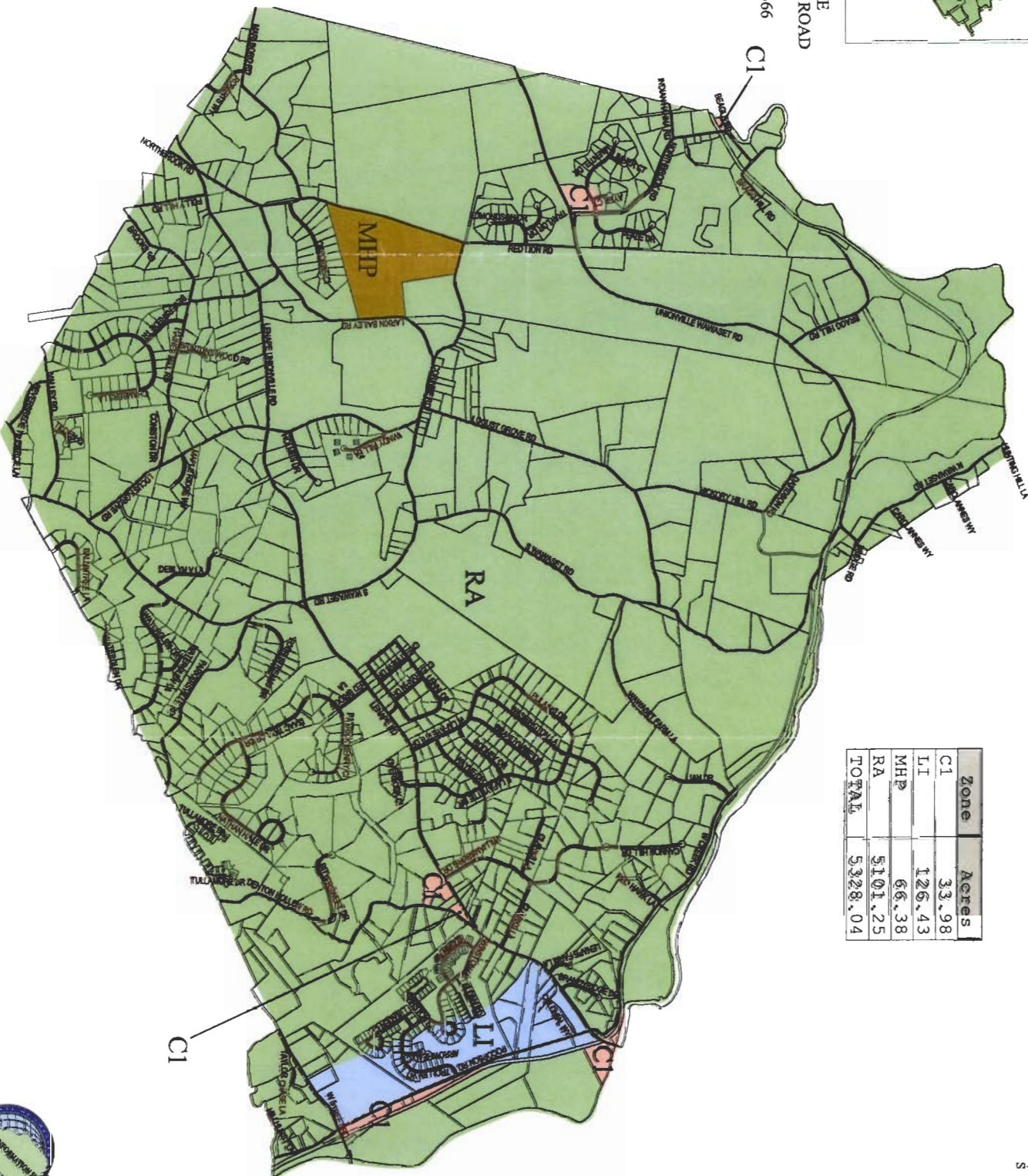


Municipality  
Location



TOWNSHIP OFFICE  
740 DENTON HOLLOW ROAD  
PO BOX 1  
POCOPSON, PA 19366

Zone	Acres
C1	33.98
LI	126.43
MHP	66.38
RA	5101.25
<b>TOTAL</b>	<b>5328.04</b>



**POCOPSON TOWNSHIP**  
Municipality  
Map Creator

Pocopson Zoning

- C1 - Neigl
- LI - Limit
- MHP - Midd
- RA - Resi
- Road Cent
- Parcel Bou

**IMPORTANT NOTICE:**  
The Official Zoning Map in the authority regarding the current zoning other structures.

**NOTES:** Not for engineering purposes  
 Landuse Source: Planimetric features from the National Map Accuracy Standards, using first order, fully analytical digital data from aerial photography dated spring, 2000 from ground points acquired using first order planimetric methods. Aerial photography from South Zone and North American Datum  
 Copyright (c) 2008, County of Chester.

**LIMITATION AND LIABILITY OF USE:**  
 This map is intended to provide information for informational purposes only and does not constitute an offer of insurance or any other financial product. The user of this map assumes all responsibility for its use. No part of this document may be reproduced or transmitted in any form or by any means recorded or otherwise, except as expressly permitted in writing by the County of Chester.